



GeneSpin Srl Via Friuli, 51 -20135 Milano  
P.IVA e C.F. 04520270960  
administration@pec.genespin.com  
info@genespin.com

## DATA SHEET

info@genespin.com - www.genespin.com

### > K100bp DNA Ladder

A unique combination of PCR products and a number of proprietary plasmids digested with appropriate restriction enzymes to yield 12 fragments, suitable for use as molecular weight standards for agarose gel electrophoresis. The DNA includes fragments ranging from 100-3,000 base pairs. The 500 and 1,500 base pair bands have increased the intensity to serve as reference points. The approximate mass of DNA in each band is provided (0.54 µg a load) for approximating the mass of DNA in comparably intense samples of similar size.

cat. no.	amount	note	DNA fragments
STS-K100bp	500ul	range: 100bp to 3Kb	0.1, 0.2, 0.3, 0.4, 0.5, 0.6, 0.7, 0.8, 0.9, 1.0, 1.5, 3.0kb

#### SOURCE:

PCR products and double-stranded DNA digested with appropriate restriction enzymes, are phenol extracted and equilibrated to 10mM Tris-HCl (pH 8.0) and 1mM EDTA.

#### RANGE and BANDS

100-3000bp

12 bands

#### RECOMMENDED LOAD: 5ul/well

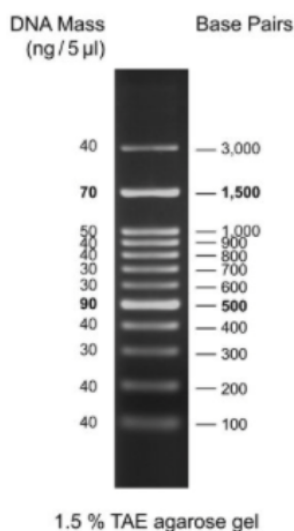
Containing orange G & xylene cyanol FF as tracking dyes.

#### STORE:

Store at 4°C for 12 month.

Under appropriate Storage Conditions, quality is guaranteed for 24 months at -20°C .

#### StoS K100bp DNA Ladder



FOR RESEARCH USE ONLY