



genespin

DATA SHEET

info@genespin.com - www.genespin.com

## protease

### > Aprotinin

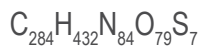
cat. no.	amount	note
STS-AP 10	10mg	powder
STS-AP 50	50mg	powder

CAS No. 9087-70-1

Competitive serine protease inhibitor which forms stable complexes with and blocks the active sites of enzymes. The binding is reversible, and most aprotinin-protease complexes dissociate at a pH>10 or <3.2. Target enzymes include trypsin, chymotrypsin, kallikrein and plasmin.

Purity : >95%

Formulation



Molecular weight  
6512

Solubility

Soluble in water .

Storage

Store dry at 2-8°C.

FOR RESEARCH USE ONLY